

Introduction

► Feature

Line pull (1 st layer):	9,070 kg / 20,000 lb (SAE J706 rating)
Line speed (1 st layer):	7.2 mpm / 23.6 fpm at 60 l / min (15.9 g / min)
Operation pressure:	175 bar / 2,540 psi
Brake:	Hydraulic brake motor and over-center valve providing full 100% braking
Clutch(freespooling):	Air clutch for rapid wire rope payout
Recommended wire rope:	14 mm x 80 m, 1,770 N/mm ² grade, A minimum breaking strength of 129 KN required
Hydraulic system:	PTO/power take off unit driven pump

► Unpacking

- Winch assembly..... 1pc
- Roller fairlead..... 1pc
- Over-center valve..... 1pc
- Air clutch..... 1pc
- Base plate..... 1pc

► Read this manual carefully

You should carefully read and understand this manual before operating it. Careless winch operation may result in personal injury hazards or property damage.

► Information requesting or parts ordering

Please specify the followings information:

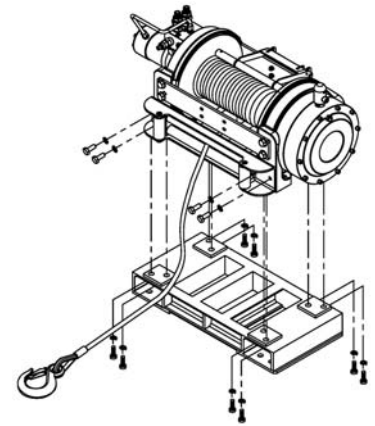
- Winch PN
- Part description
- Serial number
- Replacement part number
- Quantity for each part

Installation

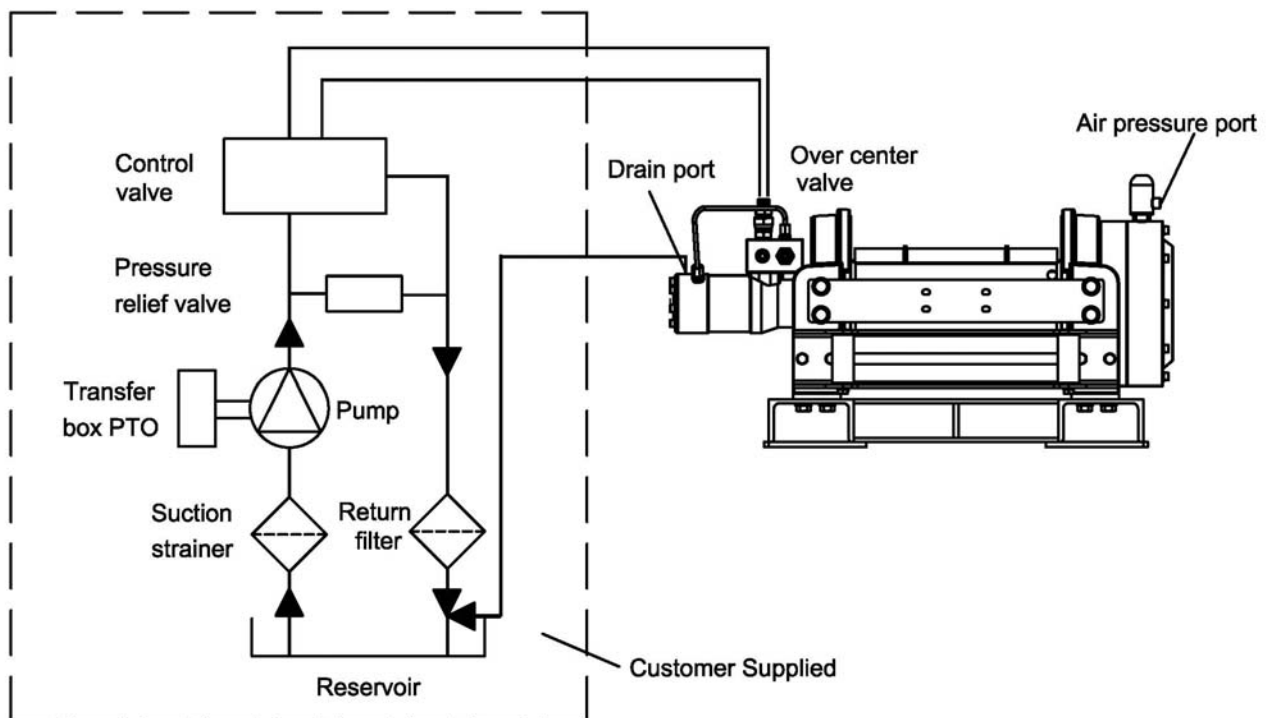
Before using the winch, make sure all components have no corrosion or damaged; the environment should be clear and dry.

► Mounting

- Winch shall be mounted on a flat and hard surface.
- Winch should be mounted as closed to center and as perpendicular as possible to the direction of the line pull.
- Wire rope shall be wound in an under-wound orientation only.
- Each four(4) M16 x 50 and four(4) M16 X 40, 12.9 grade high tensile steel bolts must be used in order to sustain the loads imposed on the winch mounting.
- Four(4) M10 X 25, 12.9 grade high tensile steel bolts must be used to fasten the roller fairlead to the winch.
- It is always preferred to use both tie bars in the final installed configuration.
- If there is a rope pileup on one end of the drum, reverse the winch to relieve the load and move your anchor point further to the center of the vehicle. Then you can rewind for a neat layer of the rope.



► Hydraulic System



(Powered by PTO / power take off unit driven pump)

The installation of the over-center valve supplied is required for 100% braking

Warning

- This winch shall only be used for vehicle recovery or for pulling and lowering boats off trailers.
- The rated line pull and speed are based on the first layer of rope on the drum.
- The rope winding on the drum shall remain 5 wraps from the drum.

Warranty

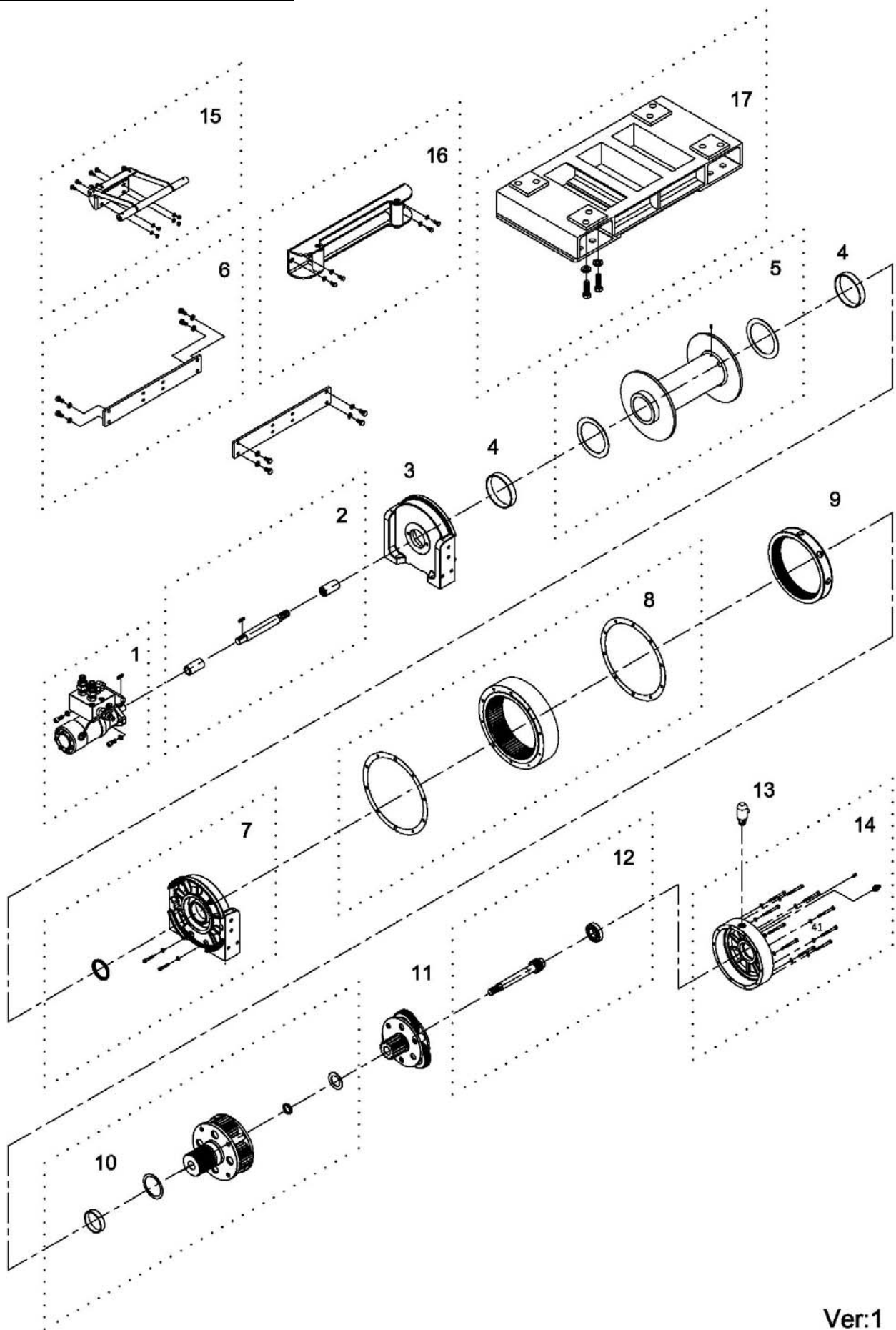
Comeup Industries Inc. takes the responsibility for all parts and components to be free from defects in materials and workmanship appearing under normal use for one year from the date of purchase.

Parts List

Ver:1

Item No.	Description	Part No.	Qty
1	Hydraulic motor kit	880183	1
2	Connecting shaft kit	880185	1
3	Motor support rack	880186	1
4	Drum bushing	880187	2
5	Drum kit	880188	1
6	Tie bar kit	880189	2
7	Gearbox support rack	880190	1
8	2 nd ring gear kit	880191	1
9	1 st ring gear	880193	1
10	2 nd stage carrier	880192	1
11	1 st stage carrier	880194	1
12	1 st shaft kit	880195	1
13	Air clutch	880181	1
14	Gear box kit	880196	1
15	Cable tensioner	880197	1
16	Roller fairlead	880198	1
17	Base plate	880199	1

Winch Assembly



Ver:1